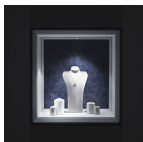




Specifications Philips MASTER LED Spot GU10 PAR16 2.4W 380lm 36D - 840 Cool White | Replaces 50W



[View Product](#)

General Information

SKU	246682
EAN	8719514421783
Brand	Philips
Manufacturer Name	MAS LEDspot UE 2.4-50W GU10 ND 840 EELB
Full box quantity	10
Any Lamp all-in warranty	5 Years
Energy efficiency class	B
Average Lifetime (h)	50000

Technical Information

Technology	LED
Product Type Category	GU10 LED
Replaces (Watt)	50
Voltage (V)	220-240
Wattage	2.4
Beam Angle (degree)	36
Dimmable	Not Dimmable
Cap / Base	GU10
Colour Code	840 Cool White
Colour temperature (Kelvin)	4000 Cool White

Colour Rendering (Ra)	80-89
Colour of Light	White
Light colour options	Single Color
Luminous Flux (Lumen)	380
Luminous Efficacy (lm/W)	158
Power factor	>0.35
Type of sensor	No Sensor

Lamp Information

Bulb finish	Clear
Finish of Reflector	Clear
Series	Master

Dimensions

Length (mm)	54
Diameter (mm)	50
Exact shape	PAR16

Why Any-lamp?

 Order from the **largest lighting specialist** in Europe  **Customised** quotation

 Up to **7 years warranty**  **Easy** return process